

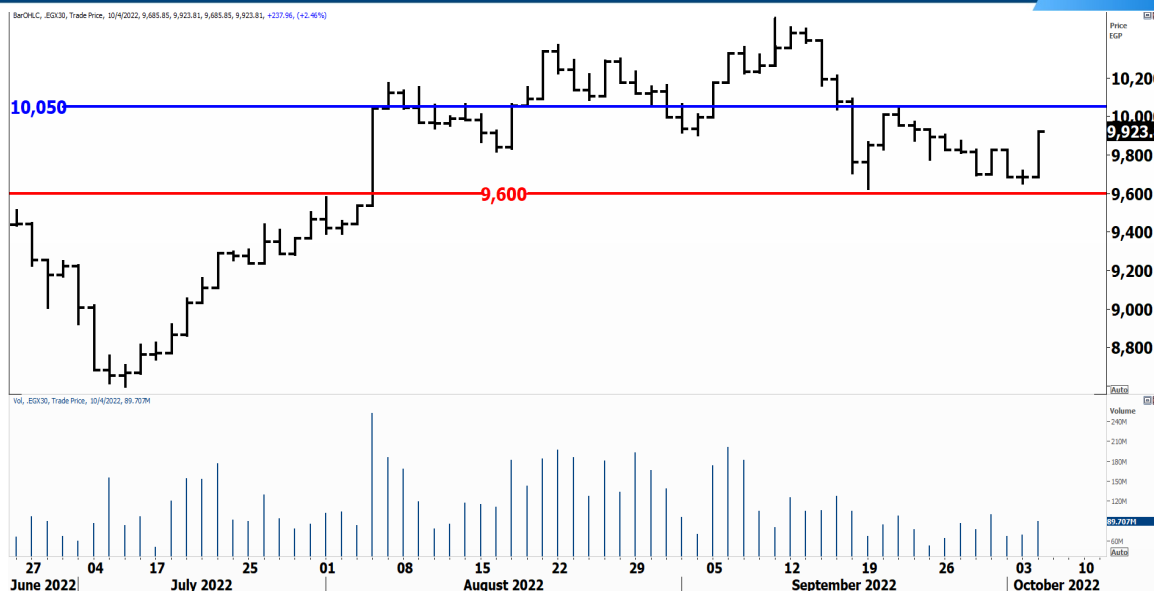


PIONEERSECURITIES

# TECH TO THE POINT

5–Oct- 2022

This report must be read with the disclaimer  
on the last page



Last	9,923.81
High Today	9,923.81
Low Today	9,685.85
Volume	M 89.707
First Support	9,600
Second Support	9,300
First Resistance	10,050
Second Resistance	10,400
Stop Loss	
HISTORICAL RETURN %	
1 WEEK	-1.30%
1 MONTH	-2.38%
1 QUARTER	11.68%
1 YEAR	-6.42%
YTD	-18.82%

## Analysis

The 9,600 served as support, however, the rise was stronger and sharper than expected. The EGX 20 closed above 9,900 breaking the high of the past four sessions and approaching the 10,000 resistance.

Those who placed their re-entry above 9,800 probably stepped in the second half of the session; investors, however, who are waiting for the 10,050 breakout should still wait for confirmation as the market can easily go down once again.

Now the 9,600 has become a stronger support and its violation will have serious implications on the short-term.

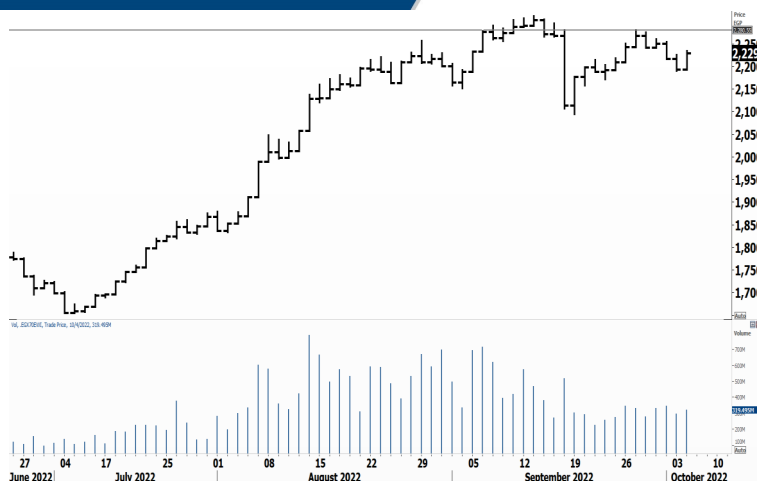
## Small Caps Index/ EGX 70

### Analysis


The rise was not as sharp as the EGX 30; thus we should wait for a break above 2,280 before stepping in once again.

Those who bought or who are holding positions can use a newly formed minor bottom at 2,190, which almost coincides with the 2,200 level.

In other words, those who are buying here should use the 2,190-2,200 as their stop should any decline takes place.



## Resistance

**SWDY**  Closed at 7.69 after breaking 7.65 to the upside. This breakout is not confirmed yet in our view, so we need to see the stock trading above resistance today.


## Support

No stocks broke their support yesterday


## Testing


### Support


**CLHO**  The stock is hovering around its support and can rebound from these levels. First level to watch, in case CLHO rises, is 4.1. A break above this level will trigger an entry signal.

**ACAMD**  The 0.39-0.4 area is the current support to watch. The stock closed at 0.41 but we will not recommend stepping in unless the 0.43 is broken to the upside. Our confirmed entry signal, however, is a break above 0.45.

### Resistance

**HELI**  If HELI breaks 6 to the upside, an entry signal will be triggered with a target around 6.4. Those who want to step in are recommended to wait for the breakout.

**PHDC**  The 1.36-1.38 area is the current resistance for the stock. A break above this range will trigger an entry signal with a target at 1.45. Position holders are recommended to place their stop below 1.28.

**ORHD**  If the 5.28 level is broken upwards, we might see a rise that can take ORHD to 5.7 as a first target. This is a short-term trade in case of a breakout.

Symbol	S. Description	Last	Buying Area 1	Buying Area 2	Selling Area 1	Selling Area 2	Selling Area 3	Stop Loss
--------	----------------	------	---------------	---------------	----------------	----------------	----------------	-----------

*N.B. please note that the levels are too close as these trading opportunities only suit T+0 speculators*

*The prices that are accompanied by a green arrow in the above table show resistance levels. Thus, a break above these levels will pave the way to achieve one (or all) of the targets.*

*The area between buying area 1 and buying area 2 is a trading area.*

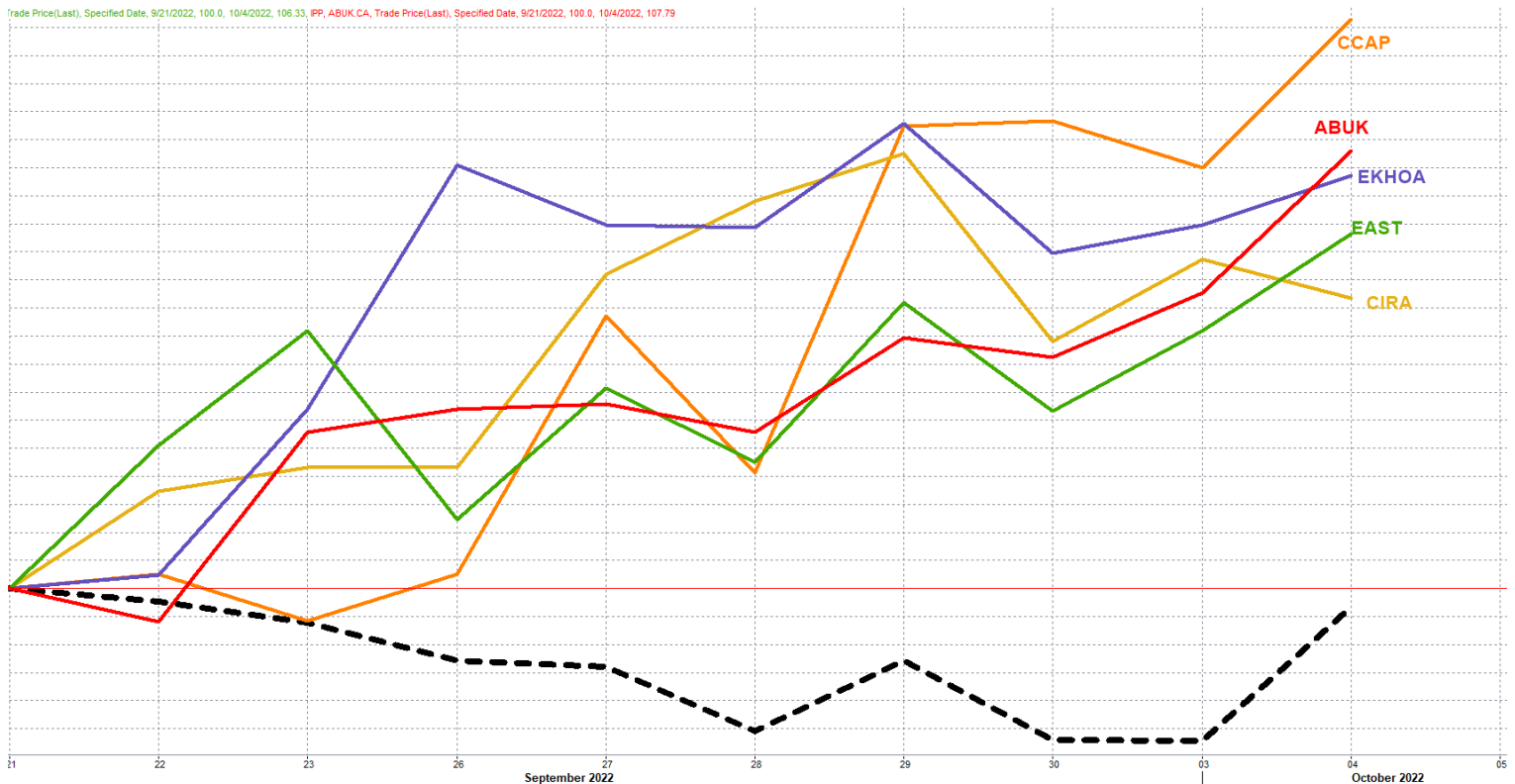
### Yesterday's T+0/T+1 Trades



Symbol	Hit first Target	Hit Second Target	Hit Third Target	Hit Stop Loss	Triggered Buy	No Action

### Top 5 Performers

### EGX 30 Stocks; Past 2 Weeks



Symbol	S. Description	Last	Support 1	Support 2	Resistance 1	Resistance 2	Trend	Recommendation	Stop Loss/ Re-Entry
COMI.CA	COM INTL BK/d	25.5	24.55	23.8	26.5	27.25	↔	Hold	24.55
EFIH.CA	E-FINANCE FOR DIGITAL&FINANCIAL INVESTEMENT	14.12	13.5	12.75	15	15.65	↔	Hold	15
EAST.CA	EASTERN CO/d	10.42	9.75	9.5	10.5	10.8	↔	Hold	9.75
EKHO.CA	EGYPT KUWAIT H/d	1.17	\$1.154	\$1.13	\$1.22	\$1.25	↓	Hold	1.25
ABUK.CA	ABU QIR FERTILIZERS /d	25.59	23.2	22.3	25.6	26.5	↔	Hold	22.3
HRHO.CA	EFG HERMES HOL/d	11.79	10.9	10	12	12.7	↓	P.Sell	12
FWRY.CA	FAWRY FOR BANKING TECHNOLOGY /d	3.67	3.5	3.37	4	4.18	↔	Hold	4.18
MFPC.CA	MISR FERTILIZERS PRODUCTION CO	106.06	101	97	110	115	↔	Hold	97
TMGH.CA	TALAT MOSTAFA/d	7.3	7	6.88	7.7	8.09	↔	Hold	6.88
EKHOA.CA	EGYPT KUWAIT HOLDING CO	23.2	22.4	21.4	24.4	25	↔	Hold	21.4
SWDY.CA	ELSWEDY ELECTR/d	7.69	7	6.85	8.07	8.33	↔	Hold	7
ETEL.CA	TELECOM EGYPT/d	17	16.6	16	17.3	17.8	↔	Hold	16
CIRA.CA	CAIRO FOR INVESTMENT AND REAL ESTATE	12.2	11.25	10.5	12.5	13	↔	Hold	10.5
MNHD.CA	NASR CITY HOUSE/d	2.65	2.6	2.4	2.85	3.05	↓	P.Sell	2.85
AMOC.CA	ALEXANDRIA MINERAL OILS CO/d	4.13	3.95	3.8	4.2	4.32	↔	Hold	3.95
CIEB.CA	CREDIT AGRICOL/d	6.09	5.85	5.53	6.24	6.68	↔	Hold	5.85
HDBK.CA	HOUSING AND DEVELOPMENT BANK	37.3	35	33.5	37.5	39	↔	Hold	37.5
CLHO.CA	CLEOPATRA HOSPITAL	3.89	3.82	3.7	4.25	4.4	↔	Hold	4.4
SKPC.CA	SIDI KERIR PET/d	7.32	7.1	6.68	7.5	8.17	↔	Hold	6.68
ESRS.CA	EZZ STEEL/d	13.88	13.35	12.7	14.05	14.8	↔	Hold	13.35
JUFO.CA	JUHAYNA FOOD INDUSTRIES	7.29	7	6.8	8	8.65	↔	Hold	7
HELI.CA	HELIOPOLIS/d	5.86	5.5	5.3	5.9	6.6	↔	Hold	5.3
QNBA.CA	QATAR NATIONAL BANK ALAHLI	15.3	14.6	13	16	16.8	↔	Hold	16
ALCN.CA	ALEXANDRIA CONTAINER AND CARGO HANDLING	10.06	9.24	8.45	10.4	11	↔	Hold	8.45
ORAS.CA	ORASCOM CONSTRUCTION	64.8	61.4	58	70	76	↔	Hold	61.4
CCAP.CA	CITADEL CAPITA/d	1.336	1.28	1.23	1.35	1.44	↔	Hold	1.23
RMDA.CA	TENTH OF RAMADAN FOR PHARMACEUTICAL	2.68	2.56	2.4	2.75	2.9	↔	Hold	2.56
PHDC.CA	PALM HILL DEV /d	1.331	1.282	1.215	1.38	1.5	↔	Hold	1.215
ORWE.CA	ORIENTAL WEAVERS /d	6.65	6.45	6.3	6.82	7.11	↔	Hold	6.3
ISPH.CA	IBNSINA PHARMA/d	1.82	1.7	1.609	1.9	2.09	↔	Hold	1.7
AUTO.CA	AUTO GHABBOUR /d	3.45	3.2	3.05	3.6	3.95	↔	Hold	3.2

## Guidelines



**Bullish**



**Bearish**



**Neutral**

Trend: (Upgrade, Downgrade): Change in trend color refers to upgrade or downgrade in the trend relative to the previous trend direction. E.g. change from “↓ Down” to “↔ Flat” is considered an upgrade and vice versa.

**Buy:** Buy the full position.

**P.Buy:** Buy portion of a position

**Hold:** Don't Buy or sell.

**P.SELL:** Sell portion of a position.

**Sell:** Sell the full position.

**Stop Loss:** Completely exit the position (or) Re-entry in cases of Selling.

## Disclaimer

This report has been prepared according to the general data available for public, in accordance with the professional standards applied in that career to the best knowledge of the reporter. The recommendations mentioned are a guiding tool representing a professional opinion, and not granting any profits, consequently it is not obligatory for our valued customers and investors. Pioneers Securities©, Egypt shall not be liable for any direct, indirect, incidental, or consequential damages, including limitation losses, lost revenues, or lost profits that may result from these materials. Republishing this report or any of its contents is subject to prior approval; referring to the source is a must. Opinions expressed are subject to change without notice and may differ or be contrary to the opinions or recommendations of Pioneers Securities©, Egypt Research or the opinions expressed by other business areas or groups of Pioneers Securities©, Egypt as a result of depending solely on the historical technical behavior (price and volume).

## Technical Analysis Department

### **Saleh Nasser**

Chief Technical Strategist

### **Ahmed Hassan**

Senior Technical Analyst

### **Dina Fahmy**

Senior Technical Analyst

### **Tips on reading the report**

The first page includes an analysis of two major indices in the Egyptian Stock Market; the norm is that we will analyze both the EGX 30 and 70, but sometimes we will compare the EGX 30 to its 50 counterpart if there is important information in this comparison. We also use the Hermes Last Index interchangeably with the EGX 30. The .HRMSL index has an important edge; it uses last prices instead of VWAP. First thing our clients should do is to read the indices analysis carefully to have a clear understanding on our overall view.

The second page includes stocks that broke out beyond their resistance levels, and those that violated their support levels. It also includes stocks that are testing their support levels and those that are testing their resistance. This analysis is important and it is the core of our recommendations. It is important to note though that not all stocks that are testing their support levels are bullish, and not all that are testing their resistance levels are bearish. To make it easier for our clients, we have placed a bull face 🐂 if we consider the stock under study bullish, and a bear face 🐻 if we consider it bearish. We also added a big bullet 📌 if we are neutral.

It is important to note that you might find a stock that we consider bullish in our analysis (in the breakouts/testing section) but it remains as a hold or partial sell in the table. The conflict here is that the table is more conservative. This will not be an issue with our clients, because our analysis will explain why we are being bullish/bearish on the stock.